

# VERSIS VESA

Monitor Lift



„visulutionary“

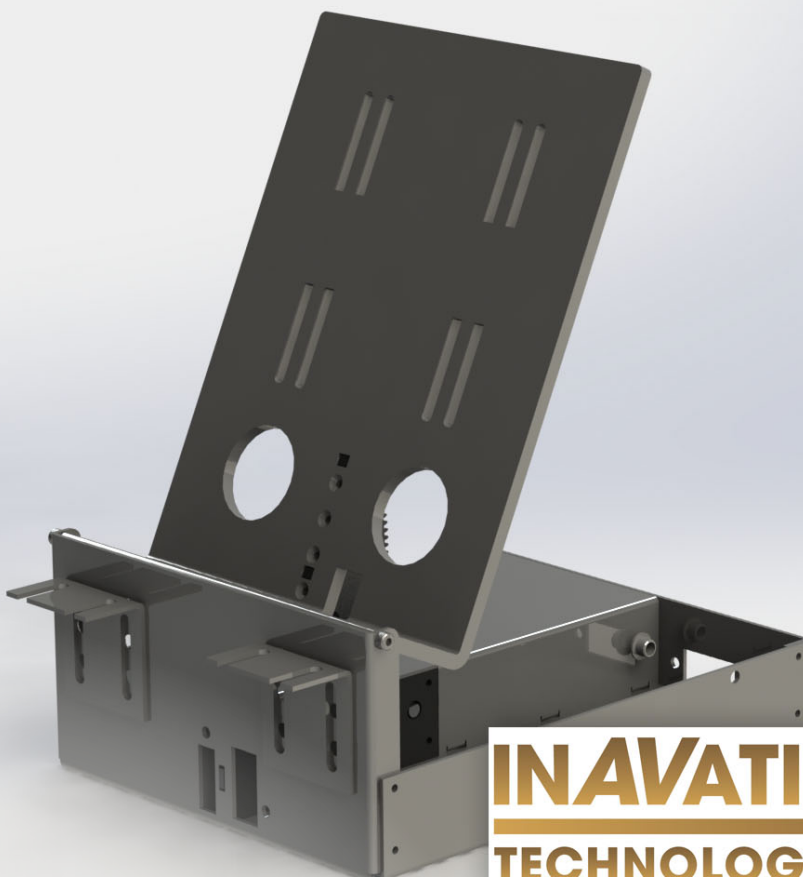
[ˈvɪʒuˈluːʒənəri] ADJ:

describes the feeling and impression  
you get when you use unique integrated  
monitor solutions from ELEMENT ONE™

ELEMENT ONE Multimedia GmbH  
Zum Murgdamm 5  
D-76456 Kuppenheim  
Tel. +49 (0) 7222 96654-21  
Fax +49 (0) 7222 96654-29  
[www.element-one.de](http://www.element-one.de)  
[info@element-one.de](mailto:info@element-one.de)

The VERSIS VESA is a very compact, retrofittable universal lifting mechanism that can be integrated into desks and consoles for the entry / exit of a monitor or touchmonitor. The monitor is attached to an adjustable VESA mount and pivots electromotorically with the image surface up and front from the table surface. The movement can be adjusted continuously at the push of a button on the device or via a remote control interface (9-pin DSub or Cat-TCP / IP).

Different touchmonitors from different manufacturers can be used - from 12.5 inch to 24 inch screen diagonal. For larger monitors, the lift can be modified at the factory.



**INAVATION AWARDS**  
**TECHNOLOGY FINALIST 2018**

# VERSIS VESA

Monitor Lift



## GENERAL SPECIFICATIONS

<b>Function</b>	Monitor Lift System with electronically motorized mechanism for raising/lowering your Monitor / Touch Monitor (Monitor not in the scope of supply); the Monitor is fixed by VESA mounting fixation points; adjustable. Motion Control via Remote Interface, stepless control (external Button or software)
<b>Motor &amp; Mechanism</b>	12 V Stepper Motor Maintenance free Low Noise: < 40dB Electronical Clamping Protection
<b>Material</b>	Steel, black, powder coated, fine structure, matt RAL 9011
<b>Dimensions</b>	(closed) 283,4 x 200 x104mm
<b>Weight</b>	approx. 3,3 kg
<b>Tilting Angle</b>	0° - 75°
<b>Appearance Height</b>	ca. 250mm at 75° (20" Monitor)
<b>Monitor</b>	Monitor is not scope of supply. Monitotype and sizes have to be provided by ordering. Maximum monitor depth advised.

<b>Motion Rate</b>	11 seconds
<b>Temperature Range</b>	0° - 50°C
<b>Remote</b>	TCP/IP on-board via RJ45 9-PIN d-sub serial for device control, adjust of the motion parameter, firmware update (E1-cable and software required)
<b>Power Consumption</b>	15W
<b>Certificates</b>	CE, FCC, RoHS/WEEE compliant
<b>Warranty</b>	2 years (Expandable, optional) Spare parts availability at least 5 years

## Scope of supply

Monitor Lift System (Lifting mechanism)  
Power adapter - Input: 100-240V~, 50/60Hz.  
1.5A; Output: 12V 5.A 60W MAX (cable length DC ~140cm AC ~ 150cm)

## OPTIONS - ON DEMAND

Customized Color - RAL Powder Coating  
Bracket Set  
Wire Remote Control  
Matching Monitor / Touch Monitor



... for furnishing and retrofitting

